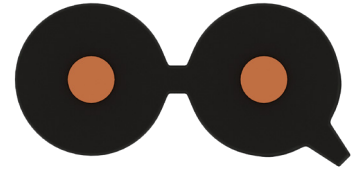


Outdoor Telephone Cables

Drop Wire

Drop Wire



Application

· Designed to provide service extension to the subscribers.

Cable Construction

1 - Conductor : Electrolytic solid copper (TS 2, IEC28, ASTM B3).
2 - Outer Jacket: Linear low-density or medium-density, UV resistant black polyethylene outer jacket (ASTM D 1248).

Technical Characteristics

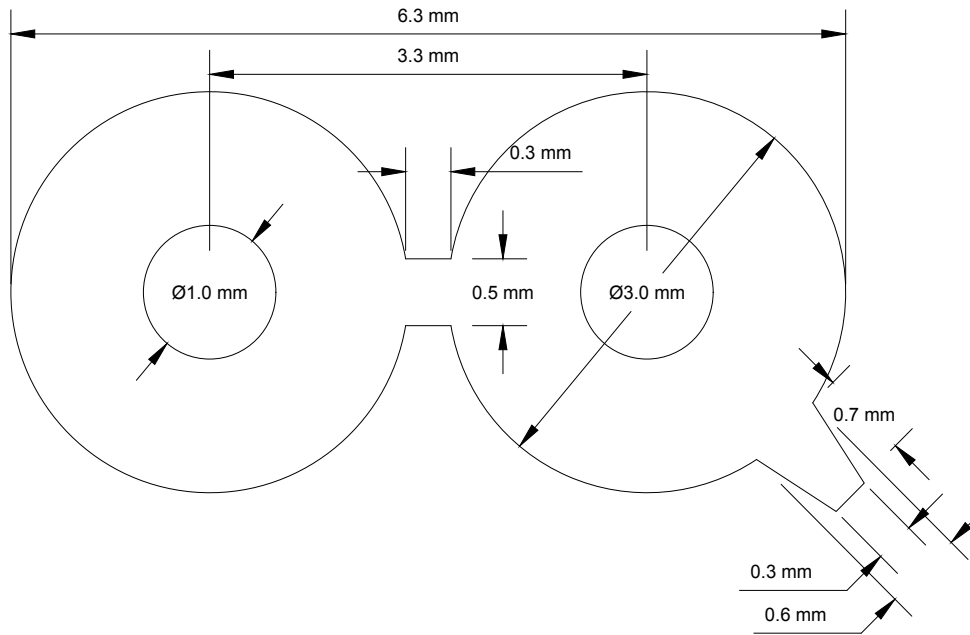
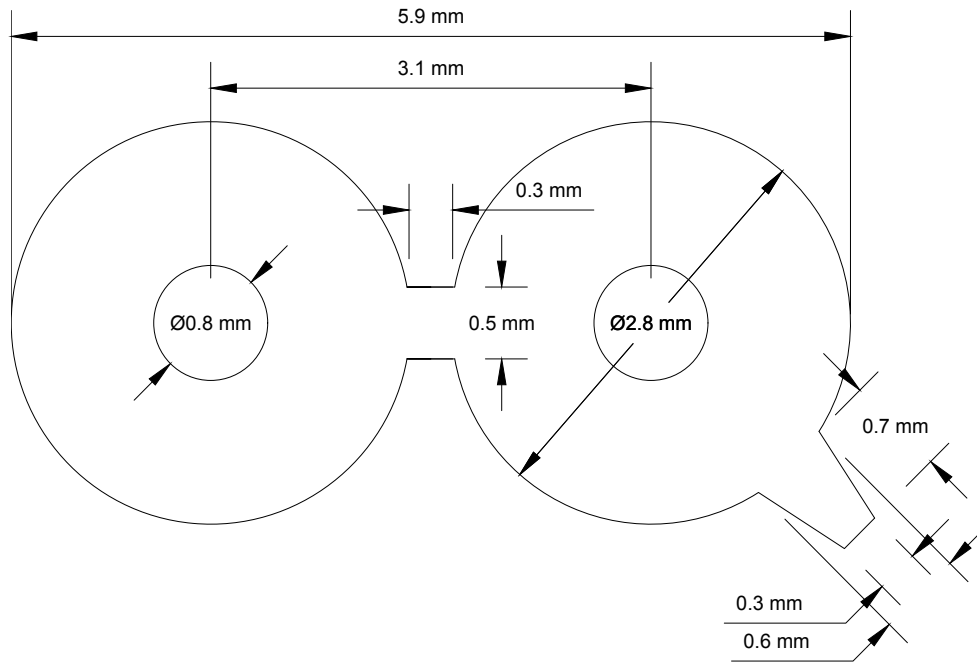
	Conductor Diameter	
	0.80 mm	1.00 mm
Conductor Resistance Ω/km (20 °C)		
Maximum Average	28,96	23,39
Insulation Resistance M Ω /km (500 V DC)	>15000	>15000
Dielectric Strength		
V (DC, 1 minute)		
Pair - Pair	5600	5600
Pair - Screen	5600	5600

Drop Wire

Dimensions	a	d	r	s	g	l	m	n	o
Nominal Values	0.8 mm	2.8 mm	0.3 mm	0.5 mm	3.1 mm	5.9 mm	0.7 mm	0.6 mm	0.3 mm
	1.0 mm	3.0 mm	0.3 mm	0.5 mm	3.3 mm	6.3 mm	0.7 mm	0.6 mm	0.3 mm
Tolerance	0.012 mm	0.1 mm	0.1 mm	0.2 mm	0.2 mm	0.5 mm	0.1 mm	0.1 mm	0.1 mm

Notes

Reference Standard: TS EN 60708



Drop Wire

Part Number	Conductor Count	Conductor Diameter (mm)	Approx. Cable Diameter (mm)	Copper Weight (kg/km)	Approx. Weight (kg/km)	Packing Lengths (m)
3.180.0.01.0080.0.0002	2	0.8	2.9	9.7	21	1000/2000
3.180.0.01.0100.0.0002	2	1	3.1	15.1	28	1000/2000

Drop Wire (Tinned Copper)

Part Number	Conductor Count	Conductor Diameter (mm)	Approx. Cable Diameter (mm)	Copper Weight (kg/km)	Approx. Weight (kg/km)	Packing Lengths (m)
3.181.0.01.0080.0.0002	2	0.8	2.9	9.7	21	1000/2000
3.181.0.01.0100.0.0002	2	1	3.1	15.1	28	1000/2000