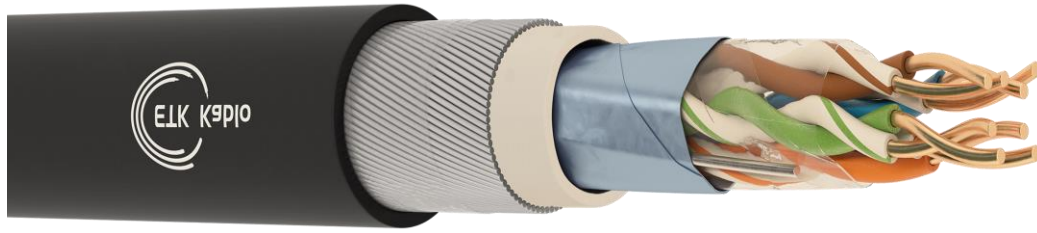


Data/LAN Cables

Cat 5e F/UTP LSOH SWA LSOH



Application

- 10 BASE-T (IEEE 802.3) Ethernet
- 100 BASE-T (IEEE 802.3u) Fast Ethernet
- 100 VG-AnyLAN (IEEE 802.12)
- 4/16 Mbps Token Ring (IEEE 802.5)
- 100 Mbps CDDI
- 52/155 Mbps ATM
- 1000 BASE-T (Gigabit Ethernet) (IEEE 802.3 ab)

Cable Construction

- 1 - Conductor : Electrolytic solid copper conductor
- 2 - Insulation : Solid polyethylene insulation
- 3 - Stranding : Insulations are stranded into pairs and all pairs are stranded together.
- 4 - Wrapping : Polyester tape
- 5 - Screen : Tinned copper earthing wire, Al/PET tape
- 6 - Inner Jacket : Halogen-free inner jacket.
- 7 - Armor : Steel wire armor
- 8 - Outer Jacket : UV resistant halogen-free outer jacket.

Technical Characteristics

Conductor Resistance Ω/km (20 °C)	Insulation Resistance $\text{M}\Omega/\text{km}$ (20 °C)	Mutual Capacitance nF/km	Resistance Unbalance %	Propagation Velocity %	Characteristic Impedance Ω (1-100 MHz)	Operating Voltage V DC	Test Voltage V (DC. 1 minute)
Max. 94	5000	Max. 56	%2	%67-69	100 \pm %15	250	1200

Mechanical Characteristics

Bending Radius	Temperature Range Operating
8.0xD mm	-55°C ~ +60°C

Standards

Manufacturing	Smoke Density Test	Flame Retardancy Test	Corrosive Gas Test	Halogen-free Test
ANSI/TIA-568-C.2, IEC-61156-5, IEC-11801	IEC 61034-2, VDE 0482-1034-2, BS EN 61034-2	IEC 60332-1-2, VDE 0482-332-1-2, BS EN 60332-1-2	IEC 60754-2, VDE 0482-267-2-3, BS EN 50267-2-3	IEC 60754-1, VDE 0482-267-2-1, BS EN 50267-2-1

Cat 5e F/UTP LSOH SWA LSOH

Part Number	Pair Count	Conductor Diameter (AWG)	Approx. Cable Diameter (mm)	Copper Weight (kg/km)	Approx. Weight (kg/km)	Packing Lengths (m)
3.4515.02.1.0.3.3 0.A1Cb.04	4	24	10.7	17.4	225	500/1000