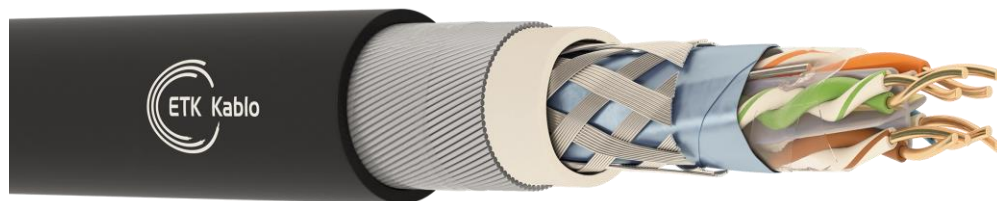


## Data/LAN Cables

### Cat 6 SF/UTP LSOH SWA LSOH



#### Application

- ISDN
- 4/6 Mbps Token Ring (IEEE 802.5)
- 100 Mbps CDDI
- 250 Mbps ATM Power over Ethernet (PoE)
- 10 BASE-T Ethernet (IEEE 802.3j)
- 100 BASE-VG AnyLAN (IEEE 802.12)
- 1000 BASE-T 1 Gigabit Ethernet (IEEE 802.3 ab)

#### Cable Construction

- |                  |   |   |
|------------------|---|---|
| 1 - Conductor    | : | Electrolytic solid copper conductor                     |
| 2 - Insulation   | : | Solid polyethylene insulation                           |
| 3 - Stranding    | : | Insulations are stranded into pairs                     |
| 4 - Separator    | : | Pairs are stranded together with star shaped separator  |
| 5 - Screen       | : | Drain wire, Al/PET tape, tinned copper braiding         |
| 6 - Inner Jacket | : | UV resistant halogen-free inner jacket, RAL 7035 (Grey) |
| 7 - Armour       | : | Steel wire armour                                       |
| 8 - Outer Jacket | : | UV resistant halogen-free outer jacket, RAL 7035 (Grey) |

#### Technical Characteristics

| Conductor Resistance<br>$\Omega/\text{km}$<br>(20 °C) | Insulation Resistance<br>$\text{M}\Omega/\text{km}$<br>(20 °C) | Mutual Capacitance<br>nF/km | Capacitance Unbalance<br>% | Propagation Velocity<br>% | Characteristic Impedance<br>$\Omega$<br>(1-250 MHz) | Operating Voltage<br>V DC | Test Voltage<br>V<br>(DC. 1 minute) |
|---|--|-----------------------------|----------------------------|---------------------------|---|---------------------------|-------------------------------------|
| Max. 94   | 5000   | Max. 56                     | %2                         | %67-69                    | 100 $\pm$ 15  | 250                       | 1200                                |

#### Mechanical Characteristics

| Bending Radius | Temperature Range Operating |
|----------------|-----------------------------|
| 8.0xD mm       | -20°C ~ +60°C               |

#### Standards

| Manufacturing                                  | Smoke Density Test                                | Flame Propagation Test                                    | Corrosive Gas Test                                   | Halogen-free Test                                    |
|--|---|---|--|--|
| ANSI/TIA-568-C.2,<br>IEC-61156-5,<br>IEC-11801 | IEC 61034-2,<br>VDE 0482-1034-2,<br>BS EN 61034-2 | IEC 60332-3-24,<br>VDE 0482-332-3-31,<br>BS EN 60332-3-24 | IEC 60754-2,<br>VDE 0482-267-2-3,<br>BS EN 50267-2-3 | IEC 60754-1,<br>VDE 0482-267-2-1,<br>BS EN 50267-2-1 |

#### Electrical Properties

| Frequency<br>MHz | Insertion Loss<br>dB/100m<br>(Max.) | Near-end Crosstalk (NEXT)<br>dB<br>(Min.) | Power-sum Near-end Crosstalk (PSNEXT)<br>dB<br>(Min.) | Equal-level Far-end Crosstalk (ELFEXT)<br>dB/100m<br>(Min.) | Power-sum Equal Level Far-end Crosstalk (PSELFEXT)<br>dB/100m<br>(Min.) | Return Loss (RL)<br>dB<br>(Min.) |
|------------------|-------------------------------------|---|---|---|---|----------------------------------|
| 1                | 2                                   | 74.3                                      | 72.3  | 67.8  | 64.8  | 20                               |
| 4                | 3.8                                 | 65.3                                      | 63.3  | 55.8  | 52.8  | 23                               |
| 8                | 5.3                                 | 60.8                                      | 58.8  | 49.7  | 46.7  | 24.5                             |
| 10               | 6                                   | 59.3                                      | 57.3  | 47.8  | 44.8  | 25                               |
| 16               | 7.6                                 | 56.2                                      | 54.2  | 43.7  | 40.7  | 25                               |
| 20               | 8.5                                 | 54.8                                      | 52.8  | 41.8  | 38.8  | 24.3                             |
| 25               | 9.5                                 | 53.3                                      | 51.3  | 39.8  | 36.8  | 23.6                             |
| 31.25            | 10.7                                | 51.9                                      | 49.9  | 37.9  | 34.9  | 21.5                             |
| 62.5             | 15.4                                | 47.4                                      | 45.4  | 31.9  | 28.9  | 20.1                             |
| 100              | 19.8                                | 44.3                                      | 42.3  | 27.8  | 24.8  | 18                               |
| 200              | 29                                  | 39.8                                      | 37.8  | 21.8  | 18.8  | 17.3                             |
| 250              | 32.8                                | 38.3                                      | 36.3  | 19.8  | 16.8  | 16.8                             |

**Cat 6 SF/UTP LSOH SWA LSOH**

| Part Number                 | Pair Count | Conductor Diameter (AWG) | Approx. Cable Diameter (mm) | Copper Weight (kg/km) | Approx. Weight (kg/km) | Packing Lengths (m) |
|-----------------------------|------------|--------------------------|-----------------------------|-----------------------|------------------------|---------------------|
| 3.4635.02.1.0.3.3 0.A1Db.04 | 4          | 23                       | 11.9                        | 25.6                  | 269                    | 305/500/1000        |