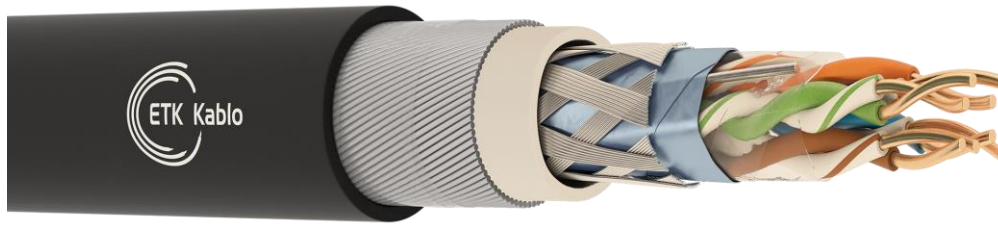


## Data/LAN Cables

### Cat 5e SF/UTP LSOH SWA LSOH



#### Application

- 10 BASE-T (IEEE 802.3) Ethernet
- 100 BASE-T (IEEE 802.3u) Fast Ethernet
- 100 VG-AnyLAN (IEEE 802.12)
- 4/16 Mbps Token Ring (IEEE 802.5)
- 100 Mbps CDDI
- 52/155 Mbps ATM
- 1000 BASE-T (Gigabit Ethernet) (IEEE 802.3 ab)

#### Cable Construction

- 1 - Conductor : Electrolytic solid copper conductor
- 2 - Insulation : Solid polyethylene insulation
- 3 - Stranding : Insulations are stranded into pairs and all pairs are stranded together.
- 4 - Wrapping : Polyester tape
- 5 - Screen : Tinned copper earthing wire, Al/PET tape, tinned copper braiding
- 6 - Inner Jacket : Halogen-free inner jacket.
- 7 - Armor : Steel wire armour
- 8 - Outer Jacket : UV resistant halogen-free outer jacket.

#### Technical Characteristics

Conductor Resistance $\Omega/\text{km}$ (20 °C)	Insulation Resistance $\text{M}\Omega/\text{km}$ (20 °C)	Mutual Capacitance nF/km	Capacitance Unbalance %	Propagation Velocity %	Characteristic Impedance $\Omega$ (1-100 MHz)	Operating Voltage V DC	Test Voltage V (DC. 1 minute)
Max. 94	5000	Max. 56	%2	%67-69	100 $\pm$ %15	250	1200

#### Mechanical Characteristics

Bending Radius	Temperature Range Operating
8.0xD mm	-55°C ~ +60°C

#### Standards

Manufacturing	Smoke Density Test	Flame Propagation Test	Corrosive Gas Test	Halogen-free Test
ANSI/TIA-568-C.2, IEC-61156-5, IEC-11801	IEC 61034-2, VDE 0482-1034-2, BS EN 61034-2	IEC 60332-3-24, VDE 0482-332-3-31, BS EN 60332-3-24	IEC 60754-2, VDE 0482-267-2-3, BS EN 50267-2-3	IEC 60754-1, VDE 0482-267-2-1, BS EN 50267-2-1

Frequency MHz	Insertion Loss dB/100m (Max.)	Near-end Crosstalk (NEXT) dB (Min.)	Power-sum Near-end Crosstalk (PSNEXT) dB (Min.)	Equal-level Far-end Crosstalk (ELFEXT) dB/100m (Min.)	Power-sum Equal Level Far-end Crosstalk (PSELFEXT) dB/100m (Min.)	Return Loss (RL) dB (Min.)
1	2	65.3	62.3	63.8	60.8	20
4	4.1	56.3	53.3	51.7	48.8	23
8	5.8	51.8	48.8	45.7	42.7	24.5
10	6.5	50.3	47.3	43.8	40.8	25
16	8.2	47.2	44.2	39.7	36.7	25
20	9.3	45.8	42.8	37.8	34.8	25
25	10.4	44.3	41.3	35.8	32.8	24.3
31.25	11.7	42.9	39.9	33.9	30.9	23.6
62.5	17	38.4	35.4	27.9	24.9	21.5
100	22	35.3	32.3	23.8	20.8	20.1

### Cat 5e SF/UTP LSOH SWA LSOH

Part Number	Pair Count	Conductor Diameter (AWG)	Approx. Cable Diameter (mm)	Copper Weight (kg/km)	Approx. Weight (kg/km)	Packing Lengths (m)
3.4530.02.1.0.3.3 0.A1Cb.04	4	24	11.1	22.9	239	500/1000