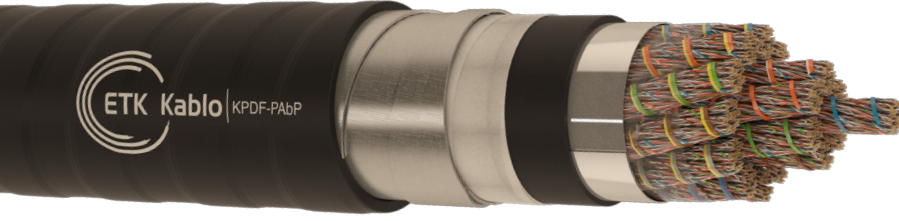


Harici Telefon Kabloları

KPDF-PAbP - PDF-PAbP

A-02YSF(L)2Yb2Y - A-2YF2Y(L)b2Y



Kullanım Alanları

- Doğrudan yer altına gömülebilir.
- Yer altına döşenen borular içinde.
- İletken çapı 0.4 ve 0.5 mm olan kablolar kısa mesafe dağıtım şebekelerinde.
- İletken çapı 0.6, 0.63, 0.65, 0.8 ve 0.9 mm olan kablolar ise uzun mesafeli şebekelerde.

Kablo Yapısı

- 1 - İletken : Som elektrolitik tavlı mono bakır (CCITT Sarı Kitap Cilt III-2-G.541 B maddesi, IEC 28 ve ASTM B 3'e göre).
- 2 - İzole : Farklı renklerde solid polietilen tabakası ile kaplanmış köpüklü polietilen veya solid polietilen izole (BS 6234 Tip 03 - ASTM D 1248).
- 3 - Büküm : Çekirdek, diyafoni zayıflaması ve kapasite dengesizliğini minimuma indirmek için özel hat ve boylarda bükülmüş dörtlülerden veya perlerden meydana gelen 10 perlik grupların oluşturduğu 25, 50 veya 100 perlik paketlerin birlikte bükülmesi ile elde edilir.
- 4 - Dolgu Materyali : Kablo özü, içerisindeki hava boşluklarından suyun ilerlemesini önlemek için, özel bir dolgu malzemesi (jel) ile doldurulur.
- 5 - Sargı : Kablo özü üzerine, uzunlamasına veya helisel olarak, higroskopik olmayan (nem içermeyen) ve dielektrik özelliği olan bir polyester bant uygulanır.
- 6 - Dolgu Materyali : Sargı ile ekran arasına, su sızdırmazlığını sağlamak amacıyla yeterli miktarda ikinci bir dolgu malzemesi (jel) uygulanır.
- 7 - Ekran : Her iki yüzü de kopolimer ile kaplı düz alüminyum folyo kablo özü üzerine uzunlamasına uygulanır.
- 8 - İç Kılıf : Lineer alçak yoğunluklu veya orta yoğunluklu, UV rezistanslı siyah polietilen dış kılıf (ASTM D 1248).
- 9 - Dolgu Materyali : Su sızdırmazlığını sağlamak amacı ile iç kılıfla zırh arasına şişen bant veya dolgu malzemesi (jel) uygulanır.
- 10 - Zırh : Kablonun mekanik direncini artırmak için birinin bıraktığı boşluğu diğeri kapatacak şekilde, iki kat galvanizli çelik bant, helisel olarak uygulanır.
- 11 - Dış Kılıf : Lineer alçak yoğunluklu veya orta yoğunluklu, UV rezistanslı siyah polietilen dış kılıf (ASTM D 1248).

Notlar

Referans Standardı: TS EN 60708

Teknik Özellikler

| | İletken Çapı | | | | | | |
|---|--------------|---------|---------|---------|---------|---------|---------|
| | 0.40 mm | 0.50 mm | 0.60 mm | 0.63 mm | 0.65 mm | 0.80 mm | 0.90 mm |
| İletken Direnci Ω/km (20 °C) | | | | | | | |
| Maksimum Ortalama | 139,4 | 89,4 | 62,1 | 58 | 57 | 35 | 27,6 |
| Maksimum Bireysel | 146,6 | 93 | 64,6 | 60 | 58 | 37 | 28,8 |
| İzolasyon Direnci MΩ/km (500 V DC) | >10000 | >10000 | >15000 | >15000 | >15000 | >15000 | >15000 |
| Efektif Kapasite nF/km (800 Hz) | | | | | | | |
| Maksimum Ortalama | 50 | 50 | 45 | 45 | 45 | 45 | 45 |
| Maksimum Bireysel | 56 | 56 | 51 | 51 | 51 | 51 | 51 |
| Kapasite Dengesizliği pF/500 m | | | | | | | |
| Perler Arası | | | | | | | |
| Maksimum Ortalama | 125 | 125 | 60 | 60 | 60 | 60 | 60 |
| Maksimum Bireysel | 350 | 350 | 325 | 325 | 325 | 325 | 325 |
| Komşu Dörtler Arası | | | | | | | |
| Maksimum Ortalama | 125 | 125 | 60 | 60 | 60 | 60 | 60 |
| Maksimum Bireysel | 275 | 275 | 270 | 270 | 270 | 270 | 270 |
| Ekrana Karşı | | | | | | | |
| Maksimum Ortalama | 500 | 500 | 325 | 325 | 325 | 325 | 325 |
| Maksimum Bireysel | 2000 | 2000 | 1300 | 1300 | 1300 | 1300 | 1300 |
| Dielektrik Kuvveti | | | | | | | |
| V (DC, 1 dakika) | | | | | | | |
| Per - Per | 1400 | 1400 | 2000 | 2000 | 2000 | 2400 | 3000 |
| Per - Ekran | 1400 | 1400 | 2000 | 2000 | 2000 | 2400 | 3000 |
| V (DC, 3 Saniye) | | | | | | | |
| Per - Ekran | 9000 | 9000 | 9000 | 9000 | 9000 | 9000 | 9000 |

KPDF-PAbP (Quad)

| Part Numarası | Per Sayısı | İletken Çapı (mm) | Ortalama Dış Çap (mm) | Bakır Ağırlığı (kg/km) | Ortalama Ağırlık (kg/km) | Makara Boyu (m) |
|-------------------------|------------|-------------------|-----------------------|------------------------|--------------------------|-----------------|
| 3.170.4.5.1.0040.0.0002 | 2 | 0.4 | 10.1 | 4.8 | 144 | 1200 |
| 3.170.4.5.1.0040.0.0004 | 4 | 0.4 | 10.5 | 9.5 | 157 | 1200 |
| 3.170.4.5.1.0040.0.0006 | 6 | 0.4 | 11.5 | 14.3 | 186 | 1200 |
| 3.170.4.5.1.0040.0.0010 | 10 | 0.4 | 11.7 | 23.7 | 199 | 1200 |
| 3.170.4.5.1.0040.0.0020 | 20 | 0.4 | 14.1 | 47.4 | 282 | 1200 |
| 3.170.4.5.1.0040.0.0030 | 30 | 0.4 | 16.6 | 71.1 | 407 | 1200 |
| 3.170.4.5.1.0040.0.0040 | 40 | 0.4 | 17.4 | 94.8 | 458 | 1200 |
| 3.170.4.5.1.0040.0.0050 | 50 | 0.4 | 18.4 | 118.5 | 514 | 1200 |
| 3.170.4.5.1.0040.0.0070 | 70 | 0.4 | 19.7 | 165.9 | 608 | 1200 |
| 3.170.4.5.1.0040.0.0080 | 80 | 0.4 | 20.6 | 189.6 | 664 | 1000 |
| 3.170.4.5.1.0040.0.0100 | 100 | 0.4 | 22.2 | 241.6 | 779 | 1000 |
| 3.170.4.5.1.0040.0.0150 | 150 | 0.4 | 26.3 | 362.4 | 1068 | 1000 |
| 3.170.4.5.1.0040.0.0200 | 200 | 0.4 | 28.5 | 483.2 | 1281 | 1000 |
| 3.170.4.5.1.0040.0.0250 | 250 | 0.4 | 31.1 | 604 | 1587 | 500 |
| 3.170.4.5.1.0040.0.0300 | 300 | 0.4 | 33.5 | 724.8 | 1825 | 500 |
| 3.170.4.5.1.0040.0.0350 | 350 | 0.4 | 34.8 | 845.5 | 2015 | 500 |
| 3.170.4.5.1.0040.0.0400 | 400 | 0.4 | 37.3 | 966.3 | 2278 | 500 |
| 3.170.4.5.1.0040.0.0500 | 500 | 0.4 | 41.4 | 1207.9 | 2771 | 400 |
| 3.170.4.5.1.0040.0.0600 | 600 | 0.4 | 44.9 | 1449.5 | 3247 | 400 |
| 3.170.4.5.1.0040.0.0700 | 700 | 0.4 | 46.4 | 1691 | 3571 | 400 |
| 3.170.4.5.1.0040.0.0800 | 800 | 0.4 | 49.1 | 1932.6 | 4008 | 400 |
| 3.170.4.5.1.0040.0.0900 | 900 | 0.4 | 53.1 | 2174.2 | 4552 | 300 |
| 3.170.4.5.1.0040.0.1000 | 1000 | 0.4 | 55.3 | 2415.8 | 4961 | 300 |
| 3.170.4.5.1.0040.0.1200 | 1200 | 0.4 | 59.2 | 2898.9 | 5748 | 300 |
| 3.170.4.5.1.0040.0.1500 | 1500 | 0.4 | 66.4 | 3623.6 | 7120 | 250 |
| 3.170.4.5.1.0040.0.1600 | 1600 | 0.4 | 68.1 | 3865.2 | 7509 | 250 |
| 3.170.4.5.1.0040.0.1800 | 1800 | 0.4 | 72.6 | 4348.3 | 8434 | 250 |
| Part Numarası | Per Sayısı | İletken Çapı (mm) | Ortalama Dış Çap (mm) | Bakır Ağırlığı (kg/km) | Ortalama Ağırlık (kg/km) | Makara Boyu (m) |
| 3.170.4.5.1.0050.0.0002 | 2 | 0.5 | 9.9 | 7.5 | 159 | 1000/2000 |
| 3.170.4.5.1.0050.0.0004 | 4 | 0.5 | 10.5 | 14.9 | 177 | 1200 |
| 3.170.4.5.1.0050.0.0006 | 6 | 0.5 | 12.5 | 22.3 | 237 | 1200 |
| 3.170.4.5.1.0050.0.0010 | 10 | 0.5 | 12.7 | 37.1 | 256 | 1200 |
| 3.170.4.5.1.0050.0.0020 | 20 | 0.5 | 15.5 | 74.1 | 372 | 1200 |
| 3.170.4.5.1.0050.0.0030 | 30 | 0.5 | 18.2 | 111.1 | 500 | 1200 |
| 3.170.4.5.1.0050.0.0040 | 40 | 0.5 | 19.3 | 148.1 | 574 | 1200 |
| 3.170.4.5.1.0050.0.0050 | 50 | 0.5 | 20.5 | 185.2 | 654 | 1000 |
| 3.170.4.5.1.0050.0.0070 | 70 | 0.5 | 22.1 | 259.2 | 784 | 1000 |
| 3.170.4.5.1.0050.0.0080 | 80 | 0.5 | 23.1 | 296.2 | 864 | 1000 |
| 3.170.4.5.1.0050.0.0100 | 100 | 0.5 | 25.4 | 377.5 | 1039 | 1000 |
| 3.170.4.5.1.0050.0.0150 | 150 | 0.5 | 30 | 566.2 | 1436 | 1000 |
| 3.170.4.5.1.0050.0.0200 | 200 | 0.5 | 32.9 | 755 | 1819 | 500 |
| 3.170.4.5.1.0050.0.0250 | 250 | 0.5 | 35.6 | 943.7 | 2153 | 500 |
| 3.170.4.5.1.0050.0.0300 | 300 | 0.5 | 36.7 | 1132.4 | 2560 | 500 |
| 3.170.4.5.1.0050.0.0350 | 350 | 0.5 | 40.2 | 1321.1 | 2785 | 400 |
| 3.170.4.5.1.0050.0.0400 | 400 | 0.5 | 42.5 | 1509.9 | 3117 | 400 |

KPDF-PAbP (Quad)

| Part Numarası | Per Sayısı | İletken Çapı (mm) | Ortalama Dış Çap (mm) | Bakır Ağırlığı (kg/km) | Ortalama Ağırlık (kg/km) | Makara Boyu (m) |
|-------------------------|------------|-------------------|-----------------------|------------------------|--------------------------|-----------------|
| 3.170.4.5.1.0050.0.0500 | 500 | 0.5 | 48.1 | 1887.3 | 3877 | 400 |
| 3.170.4.5.1.0050.0.0600 | 600 | 0.5 | 51.8 | 2264.8 | 4518 | 300 |
| 3.170.4.5.1.0050.0.0700 | 700 | 0.5 | 54 | 2642.2 | 5040 | 300 |
| 3.170.4.5.1.0050.0.0800 | 800 | 0.5 | 57.4 | 3019.7 | 5680 | 300 |
| 3.170.4.5.1.0050.0.0900 | 900 | 0.5 | 62.1 | 3397.1 | 6464 | 300 |
| 3.170.4.5.1.0050.0.1000 | 1000 | 0.5 | 64.8 | 3774.6 | 7068 | 300 |
| 3.170.4.5.1.0050.0.1200 | 1200 | 0.5 | 69.4 | 4529.5 | 8223 | 250 |
| 3.170.4.5.1.0050.0.1500 | 1500 | 0.5 | 78 | 5661.9 | 10214 | 250 |
| 3.170.4.5.1.0050.0.1600 | 1600 | 0.5 | 80.1 | 6039.3 | 10798 | 200 |
| 3.170.4.5.1.0050.0.1800 | 1800 | 0.5 | 85.4 | 6794.2 | 12147 | 200 |
| Part Numarası | Per Sayısı | İletken Çapı (mm) | Ortalama Dış Çap (mm) | Bakır Ağırlığı (kg/km) | Ortalama Ağırlık (kg/km) | Makara Boyu (m) |
| 3.170.4.5.1.0060.0.0002 | 2 | 0.6 | 11.1 | 10.7 | 173 | 1200 |
| 3.170.4.5.1.0060.0.0004 | 4 | 0.6 | 11.8 | 21.4 | 200 | 1200 |
| 3.170.4.5.1.0060.0.0006 | 6 | 0.6 | 13.4 | 32 | 253 | 1200 |
| 3.170.4.5.1.0060.0.0010 | 10 | 0.6 | 13.7 | 53.4 | 279 | 1200 |
| 3.170.4.5.1.0060.0.0020 | 20 | 0.6 | 17.1 | 106.7 | 424 | 1200 |
| 3.170.4.5.1.0060.0.0030 | 30 | 0.6 | 20.9 | 160 | 645 | 1000 |
| 3.170.4.5.1.0060.0.0040 | 40 | 0.6 | 22.2 | 213.3 | 748 | 1000 |
| 3.170.4.5.1.0060.0.0050 | 50 | 0.6 | 23.8 | 266.6 | 860 | 1000 |
| 3.170.4.5.1.0060.0.0070 | 70 | 0.6 | 25.9 | 373.2 | 1050 | 1000 |
| 3.170.4.5.1.0060.0.0080 | 80 | 0.6 | 27.3 | 426.6 | 1161 | 1000 |
| 3.170.4.5.1.0060.0.0100 | 100 | 0.6 | 29.9 | 543.6 | 1400 | 1000 |
| 3.170.4.5.1.0060.0.0150 | 150 | 0.6 | 36.2 | 815.4 | 1990 | 500 |
| 3.170.4.5.1.0060.0.0200 | 200 | 0.6 | 39.6 | 1087.1 | 2437 | 500 |
| 3.170.4.5.1.0060.0.0250 | 250 | 0.6 | 43.3 | 1358.9 | 3015 | 400 |
| 3.170.4.5.1.0060.0.0300 | 300 | 0.6 | 47 | 1630.7 | 3524 | 400 |
| 3.170.4.5.1.0060.0.0350 | 350 | 0.6 | 49.1 | 1902.4 | 3921 | 400 |
| 3.170.4.5.1.0060.0.0400 | 400 | 0.6 | 51.9 | 2174.2 | 4398 | 300 |
| 3.170.4.5.1.0060.0.0500 | 500 | 0.6 | 59.2 | 2717.7 | 5521 | 300 |
| 3.170.4.5.1.0060.0.0600 | 600 | 0.6 | 64.4 | 3261.3 | 6502 | 300 |
| 3.170.4.5.1.0060.0.0700 | 700 | 0.6 | 66.8 | 3804.8 | 7216 | 250 |
| 3.170.4.5.1.0060.0.0800 | 800 | 0.6 | 71.2 | 4348.3 | 8166 | 250 |
| 3.170.4.5.1.0060.0.0900 | 900 | 0.6 | 77.1 | 4891.9 | 9323 | 250 |
| 3.170.4.5.1.0060.0.1000 | 1000 | 0.6 | 80.6 | 5435.4 | 10222 | 200 |
| 3.170.4.5.1.0060.0.1200 | 1200 | 0.6 | 86.5 | 6522.5 | 11908 | 200 |
| Part Numarası | Per Sayısı | İletken Çapı (mm) | Ortalama Dış Çap (mm) | Bakır Ağırlığı (kg/km) | Ortalama Ağırlık (kg/km) | Makara Boyu (m) |
| 3.170.4.5.1.0080.0.0002 | 2 | 0.8 | 12 | 19 | 204 | 1200 |
| 3.170.4.5.1.0080.0.0004 | 4 | 0.8 | 12.8 | 38 | 243 | 1200 |
| 3.170.4.5.1.0080.0.0006 | 6 | 0.8 | 14.9 | 56.9 | 319 | 1200 |
| 3.170.4.5.1.0080.0.0010 | 10 | 0.8 | 15.3 | 94.8 | 363 | 1200 |
| 3.170.4.5.1.0080.0.0020 | 20 | 0.8 | 19.5 | 189.6 | 578 | 1200 |
| 3.170.4.5.1.0080.0.0030 | 30 | 0.8 | 24.3 | 284.4 | 900 | 1000 |
| 3.170.4.5.1.0080.0.0040 | 40 | 0.8 | 26.2 | 379.2 | 1064 | 1000 |
| 3.170.4.5.1.0080.0.0050 | 50 | 0.8 | 28.2 | 473.9 | 1244 | 1000 |

KPDF-PAbP (Quad)

| Part Numarası | Per Sayısı | İletken Çapı (mm) | Ortalama Dış Çap (mm) | Bakır Ağırlığı (kg/km) | Ortalama Ağırlık (kg/km) | Makara Boyu (m) |
|-------------------------|------------|-------------------|-----------------------|------------------------|--------------------------|-----------------|
| 3.170.4.5.1.0080.0.0070 | 70 | 0.8 | 31 | 663.5 | 1551 | 500 |
| 3.170.4.5.1.0080.0.0080 | 80 | 0.8 | 32.7 | 758.3 | 1729 | 500 |
| 3.170.4.5.1.0080.0.0100 | 100 | 0.8 | 36.2 | 966.3 | 2118 | 500 |
| 3.170.4.5.1.0080.0.0150 | 150 | 0.8 | 44.2 | 1449.5 | 3068 | 400 |
| 3.170.4.5.1.0080.0.0200 | 200 | 0.8 | 48.6 | 1932.6 | 3808 | 400 |
| 3.170.4.5.1.0080.0.0250 | 250 | 0.8 | 53.4 | 2415.8 | 4725 | 300 |
| 3.170.4.5.1.0080.0.0300 | 300 | 0.8 | 58 | 2898.9 | 5550 | 300 |
| 3.170.4.5.1.0080.0.0350 | 350 | 0.8 | 60.5 | 3382 | 6188 | 300 |
| 3.170.4.5.1.0080.0.0400 | 400 | 0.8 | 64.5 | 3865.2 | 7006 | 300 |
| 3.170.4.5.1.0080.0.0500 | 500 | 0.8 | 73.7 | 4831.5 | 8837 | 250 |
| 3.170.4.5.1.0080.0.0600 | 600 | 0.8 | 80.2 | 5797.8 | 10446 | 200 |
| Part Numarası | Per Sayısı | İletken Çapı (mm) | Ortalama Dış Çap (mm) | Bakır Ağırlığı (kg/km) | Ortalama Ağırlık (kg/km) | Makara Boyu (m) |
| 3.170.4.5.1.0090.0.0002 | 2 | 0.9 | 12.3 | 24 | 217 | 1200 |
| 3.170.4.5.1.0090.0.0004 | 4 | 0.9 | 13.3 | 48 | 265 | 1200 |
| 3.170.4.5.1.0090.0.0006 | 6 | 0.9 | 15.6 | 72 | 351 | 1200 |
| 3.170.4.5.1.0090.0.0010 | 10 | 0.9 | 16 | 120 | 405 | 1200 |
| 3.170.4.5.1.0090.0.0020 | 20 | 0.9 | 20.5 | 240 | 660 | 1000 |
| 3.170.4.5.1.0090.0.0030 | 30 | 0.9 | 25.8 | 359.9 | 1034 | 1000 |
| 3.170.4.5.1.0090.0.0040 | 40 | 0.9 | 27.8 | 479.9 | 1232 | 1000 |
| 3.170.4.5.1.0090.0.0050 | 50 | 0.9 | 30.1 | 599.8 | 1451 | 500 |
| 3.170.4.5.1.0090.0.0070 | 70 | 0.9 | 33.1 | 839.7 | 1824 | 500 |
| 3.170.4.5.1.0090.0.0080 | 80 | 0.9 | 35 | 959.7 | 2038 | 500 |
| 3.170.4.5.1.0090.0.0100 | 100 | 0.9 | 38.9 | 1223 | 2505 | 500 |
| 3.170.4.5.1.0090.0.0150 | 150 | 0.9 | 47.7 | 1834.5 | 3656 | 400 |
| 3.170.4.5.1.0090.0.0200 | 200 | 0.9 | 52.5 | 2446 | 4559 | 300 |
| 3.170.4.5.1.0090.0.0250 | 250 | 0.9 | 57.8 | 3057.4 | 5663 | 300 |
| 3.170.4.5.1.0090.0.0300 | 300 | 0.9 | 62.8 | 3668.9 | 6670 | 300 |
| 3.170.4.5.1.0090.0.0350 | 350 | 0.9 | 65.4 | 4280.4 | 7457 | 250 |
| 3.170.4.5.1.0090.0.0400 | 400 | 0.9 | 69.8 | 4891.9 | 8455 | 250 |
| 3.170.4.5.1.0090.0.0500 | 500 | 0.9 | 79.9 | 6114.8 | 10677 | 250 |
| 3.170.4.5.1.0090.0.0600 | 600 | 0.9 | 87 | 7337.8 | 12636 | 200 |

KPDF-PAbP (Pair)

| Part Numarası | Per Sayısı | İletken Çapı (mm) | Ortalama Dış Çap (mm) | Bakır Ağırlığı (kg/km) | Ortalama Ağırlık (kg/km) | Makara Boyu (m) |
|-------------------------|------------|-------------------|-----------------------|------------------------|--------------------------|-----------------|
| 3.170.1.5.1.0040.1.0002 | 2 | 0.4 | 10.1 | 4.8 | 145 | 1200 |
| 3.170.1.5.1.0040.1.0004 | 4 | 0.4 | 11 | 9.5 | 169 | 1200 |
| 3.170.1.5.1.0040.1.0006 | 6 | 0.4 | 11.9 | 14.3 | 193 | 1200 |
| 3.170.1.5.1.0040.1.0010 | 10 | 0.4 | 12.1 | 23.7 | 207 | 1200 |
| 3.170.1.5.1.0040.1.0020 | 20 | 0.4 | 14.9 | 47.4 | 324 | 1200 |
| 3.170.1.5.1.0040.1.0025 | 25 | 0.4 | 16 | 59.3 | 371 | 1200 |
| 3.170.1.5.1.0040.1.0030 | 30 | 0.4 | 17.3 | 71.1 | 459 | 1200 |
| 3.170.1.5.1.0040.1.0040 | 40 | 0.4 | 18 | 94.8 | 475 | 1200 |
| 3.170.1.5.1.0040.1.0050 | 50 | 0.4 | 19 | 118.5 | 532 | 1200 |
| 3.170.1.5.1.0040.1.0070 | 70 | 0.4 | 20.5 | 165.9 | 627 | 1000 |
| 3.170.1.5.1.0040.1.0080 | 80 | 0.4 | 21.3 | 189.6 | 685 | 1000 |
| 3.170.1.5.1.0040.1.0100 | 100 | 0.4 | 23.1 | 241.6 | 804 | 1000 |
| 3.170.1.5.1.0040.1.0150 | 150 | 0.4 | 27.4 | 362.4 | 1160 | 1000 |
| 3.170.1.5.1.0040.1.0200 | 200 | 0.4 | 29.7 | 483.2 | 1384 | 1000 |
| 3.170.1.5.1.0040.1.0250 | 250 | 0.4 | 32.3 | 604 | 1631 | 500 |
| 3.170.1.5.1.0040.1.0300 | 300 | 0.4 | 34.6 | 724.8 | 1867 | 500 |
| 3.170.1.5.1.0040.1.0350 | 350 | 0.4 | 36.2 | 845.5 | 2067 | 500 |
| 3.170.1.5.1.0040.1.0400 | 400 | 0.4 | 38.4 | 966.3 | 2319 | 500 |
| 3.170.1.5.1.0040.1.0500 | 500 | 0.4 | 42.7 | 1207.9 | 2831 | 400 |
| 3.170.1.5.1.0040.1.0600 | 600 | 0.4 | 45.1 | 1449.5 | 3219 | 400 |
| 3.170.1.5.1.0040.1.0700 | 700 | 0.4 | 48.4 | 1691 | 3670 | 400 |
| 3.170.1.5.1.0040.1.0800 | 800 | 0.4 | 51.5 | 1932.6 | 4137 | 300 |
| 3.170.1.5.1.0040.1.0900 | 900 | 0.4 | 54.3 | 2174.2 | 4598 | 300 |
| 3.170.1.5.1.0040.1.1000 | 1000 | 0.4 | 58 | 2415.8 | 5127 | 300 |
| 3.170.1.5.1.0040.1.1200 | 1200 | 0.4 | 61.5 | 2898.9 | 5875 | 300 |
| 3.170.1.5.1.0040.1.1500 | 1500 | 0.4 | 68.6 | 3623.6 | 7222 | 250 |
| 3.170.1.5.1.0040.1.1600 | 1600 | 0.4 | 66.6 | 3865.2 | 7220 | 250 |
| 3.170.1.5.1.0040.1.1800 | 1800 | 0.4 | 76.3 | 4348.3 | 8706 | 250 |

KPDF-PAbP (Pair)

| Part Numarası | Per Sayısı | İletken Çapı (mm) | Ortalama Dış Çap (mm) | Bakır Ağırlığı (kg/km) | Ortalama Ağırlık (kg/km) | Makara Boyu (m) |
|-------------------------|------------|-------------------|-----------------------|------------------------|--------------------------|-----------------|
| 3.170.1.5.1.0050.1.0002 | 2 | 0.5 | 9.9 | 7.5 | 158 | 1000/2000 |
| 3.170.1.5.1.0050.1.0004 | 4 | 0.5 | 11 | 14.9 | 191 | 1200 |
| 3.170.1.5.1.0050.1.0005 | 5 | 0.5 | 11.9 | 18.6 | 218 | 1200 |
| 3.170.1.5.1.0050.1.0006 | 6 | 0.5 | 12.8 | 22.3 | 247 | 1200 |
| 3.170.1.5.1.0050.1.0010 | 10 | 0.5 | 13.1 | 37.1 | 269 | 1200 |
| 3.170.1.5.1.0050.1.0020 | 20 | 0.5 | 15.7 | 74.1 | 380 | 1200 |
| 3.170.1.5.1.0050.1.0025 | 25 | 0.5 | 17.1 | 92.6 | 445 | 1200 |
| 3.170.1.5.1.0050.1.0030 | 30 | 0.5 | 18.8 | 111.1 | 523 | 1200 |
| 3.170.1.5.1.0050.1.0040 | 40 | 0.5 | 19.9 | 148.1 | 597 | 1200 |
| 3.170.1.5.1.0050.1.0050 | 50 | 0.5 | 21.2 | 185.2 | 681 | 1000 |
| 3.170.1.5.1.0050.1.0070 | 70 | 0.5 | 23 | 259.2 | 818 | 1000 |
| 3.170.1.5.1.0050.1.0080 | 80 | 0.5 | 24 | 296.2 | 898 | 1000 |
| 3.170.1.5.1.0050.1.0100 | 100 | 0.5 | 26.4 | 377.5 | 1081 | 1000 |
| 3.170.1.5.1.0050.1.0150 | 150 | 0.5 | 31.4 | 566.2 | 1500 | 500 |
| 3.170.1.5.1.0050.1.0200 | 200 | 0.5 | 34.4 | 755 | 1900 | 500 |
| 3.170.1.5.1.0050.1.0250 | 250 | 0.5 | 37.3 | 943.7 | 2249 | 500 |
| 3.170.1.5.1.0050.1.0300 | 300 | 0.5 | 40.4 | 1132.4 | 2626 | 400 |
| 3.170.1.5.1.0050.1.0350 | 350 | 0.5 | 42.1 | 1321.1 | 2911 | 400 |
| 3.170.1.5.1.0050.1.0400 | 400 | 0.5 | 44.6 | 1509.9 | 3259 | 400 |
| 3.170.1.5.1.0050.1.0500 | 500 | 0.5 | 50.5 | 1887.3 | 4056 | 300 |
| 3.170.1.5.1.0050.1.0600 | 600 | 0.5 | 54.5 | 2264.8 | 4726 | 300 |
| 3.170.1.5.1.0050.1.0700 | 700 | 0.5 | 56.9 | 2642.2 | 5266 | 300 |
| 3.170.1.5.1.0050.1.0800 | 800 | 0.5 | 60.5 | 3019.7 | 5939 | 300 |
| 3.170.1.5.1.0050.1.0900 | 900 | 0.5 | 65.4 | 3397.1 | 6761 | 250 |
| 3.170.1.5.1.0050.1.1000 | 1000 | 0.5 | 68.3 | 3774.6 | 7396 | 250 |
| 3.170.1.5.1.0050.1.1200 | 1200 | 0.5 | 73.2 | 4529.5 | 8597 | 250 |
| 3.170.1.5.1.0050.1.1500 | 1500 | 0.5 | 82.3 | 5661.9 | 10686 | 200 |
| 3.170.1.5.1.0050.1.1600 | 1600 | 0.5 | 84.5 | 6039.3 | 11291 | 200 |
| 3.170.1.5.1.0050.1.1800 | 1800 | 0.5 | 90.1 | 6794.2 | 12706 | 200 |

KPDF-PAbP (Pair)

| Part Numarası | Per Sayısı | İletken Çapı (mm) | Ortalama Dış Çap (mm) | Bakır Ağırlığı (kg/km) | Ortalama Ağırlık (kg/km) | Makara Boyu (m) |
|-------------------------|------------|-------------------|-----------------------|------------------------|--------------------------|-----------------|
| 3.170.1.5.1.0060.1.0002 | 2 | 0.6 | 10.6 | 10.7 | 177 | 1200 |
| 3.170.1.5.1.0060.1.0004 | 4 | 0.6 | 11.9 | 21.4 | 222 | 1200 |
| 3.170.1.5.1.0060.1.0006 | 6 | 0.6 | 14.1 | 32 | 297 | 1200 |
| 3.170.1.5.1.0060.1.0010 | 10 | 0.6 | 14.5 | 53.4 | 326 | 1200 |
| 3.170.1.5.1.0060.1.0020 | 20 | 0.6 | 18.1 | 106.7 | 490 | 1200 |
| 3.170.1.5.1.0060.1.0025 | 25 | 0.6 | 19.3 | 133.3 | 564 | 1200 |
| 3.170.1.5.1.0060.1.0030 | 30 | 0.6 | 21.7 | 160 | 676 | 1000 |
| 3.170.1.5.1.0060.1.0040 | 40 | 0.6 | 23.1 | 213.3 | 784 | 1000 |
| 3.170.1.5.1.0060.1.0050 | 50 | 0.6 | 24.8 | 266.6 | 903 | 1000 |
| 3.170.1.5.1.0060.1.0070 | 70 | 0.6 | 27.1 | 373.2 | 1103 | 1000 |
| 3.170.1.5.1.0060.1.0080 | 80 | 0.6 | 28.5 | 426.6 | 1220 | 1000 |
| 3.170.1.5.1.0060.1.0100 | 100 | 0.6 | 31.3 | 543.6 | 1468 | 500 |
| 3.170.1.5.1.0060.1.0150 | 150 | 0.6 | 38.2 | 815.4 | 2180 | 500 |
| 3.170.1.5.1.0060.1.0200 | 200 | 0.6 | 41.8 | 1087.1 | 2662 | 400 |
| 3.170.1.5.1.0060.1.0250 | 250 | 0.6 | 45.8 | 1358.9 | 3191 | 400 |
| 3.170.1.5.1.0060.1.0300 | 300 | 0.6 | 49.4 | 1630.7 | 3713 | 400 |
| 3.170.1.5.1.0060.1.0350 | 350 | 0.6 | 51.4 | 1902.4 | 4105 | 300 |
| 3.170.1.5.1.0060.1.0400 | 400 | 0.6 | 55.5 | 2174.2 | 4690 | 300 |
| 3.170.1.5.1.0060.1.0500 | 500 | 0.6 | 62.1 | 2717.7 | 5787 | 300 |
| 3.170.1.5.1.0060.1.0600 | 600 | 0.6 | 67.4 | 3261.3 | 6792 | 250 |
| 3.170.1.5.1.0060.1.0700 | 700 | 0.6 | 70.4 | 3804.8 | 7580 | 250 |
| 3.170.1.5.1.0060.1.0800 | 800 | 0.6 | 75.1 | 4348.3 | 8579 | 250 |
| 3.170.1.5.1.0060.1.0900 | 900 | 0.6 | 81.4 | 4891.9 | 980 | 200 |
| 3.170.1.5.1.0060.1.1000 | 1000 | 0.6 | 85.1 | 5435.4 | 10746 | 200 |
| 3.170.1.5.1.0060.1.1200 | 1200 | 0.6 | 91.4 | 6522.5 | 12506 | 200 |
| Part Numarası | Per Sayısı | İletken Çapı (mm) | Ortalama Dış Çap (mm) | Bakır Ağırlığı (kg/km) | Ortalama Ağırlık (kg/km) | Makara Boyu (m) |
| 3.170.1.5.1.0063.1.0002 | 2 | 0.63 | 10.8 | 11.8 | 185 | 1200 |
| 3.170.1.5.1.0063.1.0004 | 4 | 0.63 | 12.3 | 23.6 | 235 | 1200 |
| 3.170.1.5.1.0063.1.0006 | 6 | 0.63 | 14.6 | 35.3 | 313 | 1200 |
| 3.170.1.5.1.0063.1.0010 | 10 | 0.63 | 15 | 58.8 | 347 | 1200 |
| 3.170.1.5.1.0063.1.0020 | 20 | 0.63 | 18.9 | 117.6 | 526 | 1200 |
| 3.170.1.5.1.0063.1.0025 | 25 | 0.63 | 20.2 | 147 | 607 | 1000 |
| 3.170.1.5.1.0063.1.0030 | 30 | 0.63 | 22.7 | 176.4 | 733 | 1000 |
| 3.170.1.5.1.0063.1.0040 | 40 | 0.63 | 24.3 | 235.2 | 852 | 1000 |
| 3.170.1.5.1.0063.1.0050 | 50 | 0.63 | 26.1 | 293.9 | 985 | 1000 |
| 3.170.1.5.1.0063.1.0070 | 70 | 0.63 | 28.5 | 411.5 | 1207 | 1000 |
| 3.170.1.5.1.0063.1.0080 | 80 | 0.63 | 30.1 | 470.3 | 1337 | 500 |
| 3.170.1.5.1.0063.1.0100 | 100 | 0.63 | 33.4 | 599.3 | 1697 | 500 |
| 3.170.1.5.1.0063.1.0150 | 150 | 0.63 | 40.5 | 898.9 | 2417 | 400 |
| 3.170.1.5.1.0063.1.0200 | 200 | 0.63 | 44.4 | 1198.5 | 2947 | 400 |
| 3.170.1.5.1.0063.1.0250 | 250 | 0.63 | 48.7 | 1498.2 | 3539 | 400 |
| 3.170.1.5.1.0063.1.0300 | 300 | 0.63 | 52.7 | 1797.8 | 4121.2 | 300 |
| 3.170.1.5.1.0063.1.0350 | 350 | 0.63 | 54.8 | 2097.4 | 4557 | 300 |
| 3.170.1.5.1.0063.1.0400 | 400 | 0.63 | 59.1 | 2397 | 5209 | 300 |
| 3.170.1.5.1.0063.1.0500 | 500 | 0.63 | 66.4 | 2996.3 | 6446 | 250 |
| 3.170.1.5.1.0063.1.0600 | 600 | 0.63 | 72 | 3595.5 | 7570 | 250 |
| 3.170.1.5.1.0063.1.0700 | 700 | 0.63 | 75.3 | 4194.8 | 8447 | 250 |
| 3.170.1.5.1.0063.1.0800 | 800 | 0.63 | 80.4 | 4794 | 9569 | 200 |
| 3.170.1.5.1.0063.1.0900 | 900 | 0.63 | 87.1 | 5393.3 | 10944 | 200 |
| 3.170.1.5.1.0063.1.1000 | 1000 | 0.63 | 91.2 | 5992.5 | 12007 | 200 |
| 3.170.1.5.1.0063.1.1200 | 1200 | 0.63 | 97.9 | 7191 | 13978 | 150 |

KPDF-PAbP (Pair)

| Part Numarası | Per Sayısı | İletken Çapı (mm) | Ortalama Dış Çap (mm) | Bakır Ağırlığı (kg/km) | Ortalama Ağırlık (kg/km) | Makara Boyu (m) |
|-------------------------|------------|-------------------|-----------------------|------------------------|--------------------------|-----------------|
| 3.170.1.5.1.0065.1.0002 | 2 | 0.65 | 10.9 | 12.6 | 189 | 1200 |
| 3.170.1.5.1.0065.1.0004 | 4 | 0.65 | 12.4 | 25.1 | 241 | 1200 |
| 3.170.1.5.1.0065.1.0006 | 6 | 0.65 | 14.8 | 37.6 | 324 | 1200 |
| 3.170.1.5.1.0065.1.0010 | 10 | 0.65 | 15.2 | 62.6 | 358 | 1200 |
| 3.170.1.5.1.0065.1.0020 | 20 | 0.65 | 19.2 | 125.2 | 546 | 1200 |
| 3.170.1.5.1.0065.1.0025 | 25 | 0.65 | 20.6 | 156.5 | 633 | 1000 |
| 3.170.1.5.1.0065.1.0030 | 30 | 0.65 | 23.2 | 187.8 | 763 | 1000 |
| 3.170.1.5.1.0065.1.0040 | 40 | 0.65 | 24.9 | 250.3 | 890 | 1000 |
| 3.170.1.5.1.0065.1.0050 | 50 | 0.65 | 26.7 | 312.9 | 1033 | 1000 |
| 3.170.1.5.1.0065.1.0070 | 70 | 0.65 | 29.3 | 438 | 1264 | 1000 |
| 3.170.1.5.1.0065.1.0080 | 80 | 0.65 | 30.9 | 500.6 | 1402 | 500 |
| 3.170.1.5.1.0065.1.0100 | 100 | 0.65 | 34.3 | 637.9 | 1778 | 500 |
| 3.170.1.5.1.0065.1.0150 | 150 | 0.65 | 41.7 | 956.9 | 2540 | 400 |
| 3.170.1.5.1.0065.1.0200 | 200 | 0.65 | 45.7 | 1275.8 | 3106 | 400 |
| 3.170.1.5.1.0065.1.0250 | 250 | 0.65 | 50.2 | 1594.8 | 3730 | 300 |
| 3.170.1.5.1.0065.1.0300 | 300 | 0.65 | 54.3 | 1913.7 | 4349 | 300 |
| 3.170.1.5.1.0065.1.0350 | 350 | 0.65 | 56.5 | 2232.7 | 4813 | 300 |
| 3.170.1.5.1.0065.1.0400 | 400 | 0.65 | 61 | 2551.6 | 5503 | 300 |
| 3.170.1.5.1.0065.1.0500 | 500 | 0.65 | 68.5 | 3189.5 | 6819 | 250 |
| 3.170.1.5.1.0065.1.0600 | 600 | 0.65 | 74.4 | 3827.4 | 8015 | 250 |
| 3.170.1.5.1.0065.1.0700 | 700 | 0.65 | 77.7 | 4465.3 | 8947 | 250 |
| 3.170.1.5.1.0065.1.0800 | 800 | 0.65 | 83 | 5103.2 | 10141 | 200 |
| 3.170.1.5.1.0065.1.0900 | 900 | 0.65 | 89.9 | 5741.1 | 11607 | 200 |
| 3.170.1.5.1.0065.1.1000 | 1000 | 0.65 | 94.2 | 6379 | 12735 | 200 |
| 3.170.1.5.1.0065.1.1200 | 1200 | 0.65 | 101.1 | 7654.8 | 14830 | 150 |
| Part Numarası | Per Sayısı | İletken Çapı (mm) | Ortalama Dış Çap (mm) | Bakır Ağırlığı (kg/km) | Ortalama Ağırlık (kg/km) | Makara Boyu (m) |
| 3.170.1.5.1.0080.1.0002 | 2 | 0.8 | 11.5 | 19 | 209 | 1200 |
| 3.170.1.5.1.0080.1.0004 | 4 | 0.8 | 13.3 | 38 | 277 | 1200 |
| 3.170.1.5.1.0080.1.0006 | 6 | 0.8 | 15.9 | 56.9 | 377 | 1200 |
| 3.170.1.5.1.0080.1.0010 | 10 | 0.8 | 16.5 | 94.8 | 425 | 1200 |
| 3.170.1.5.1.0080.1.0020 | 20 | 0.8 | 21 | 189.6 | 673 | 1000 |
| 3.170.1.5.1.0080.1.0025 | 25 | 0.8 | 22.8 | 237 | 792 | 1000 |
| 3.170.1.5.1.0080.1.0030 | 30 | 0.8 | 25.7 | 284.4 | 962 | 1000 |
| 3.170.1.5.1.0080.1.0040 | 40 | 0.8 | 27.7 | 379.2 | 1136 | 1000 |
| 3.170.1.5.1.0080.1.0050 | 50 | 0.8 | 29.9 | 473.9 | 1330 | 1000 |
| 3.170.1.5.1.0080.1.0070 | 70 | 0.8 | 33.1 | 663.5 | 1728 | 500 |
| 3.170.1.5.1.0080.1.0080 | 80 | 0.8 | 35 | 758.3 | 1924 | 500 |
| 3.170.1.5.1.0080.1.0100 | 100 | 0.8 | 38.8 | 966.3 | 2353 | 500 |
| 3.170.1.5.1.0080.1.0150 | 150 | 0.8 | 47.6 | 1449.5 | 3398 | 400 |
| 3.170.1.5.1.0080.1.0200 | 200 | 0.8 | 52.3 | 1932.6 | 4193 | 300 |
| 3.170.1.5.1.0080.1.0250 | 250 | 0.8 | 57.6 | 2415.8 | 5070 | 300 |
| 3.170.1.5.1.0080.1.0300 | 300 | 0.8 | 62.3 | 2898.9 | 5935 | 300 |
| 3.170.1.5.1.0080.1.0350 | 350 | 0.8 | 64.9 | 3382 | 6601 | 300 |
| 3.170.1.5.1.0080.1.0400 | 400 | 0.8 | 70.1 | 3865.2 | 7558 | 250 |
| 3.170.1.5.1.0080.1.0500 | 500 | 0.8 | 79 | 4831.5 | 9419 | 250 |
| 3.170.1.5.1.0080.1.0600 | 600 | 0.8 | 85.9 | 5797.8 | 11103 | 200 |

KPDF-PAbP (Pair)

| Part Numarası | Per Sayısı | İletken Çapı (mm) | Ortalama Dış Çap (mm) | Bakır Ağırlığı (kg/km) | Ortalama Ağırlık (kg/km) | Makara Boyu (m) |
|-------------------------|------------|-------------------|-----------------------|------------------------|--------------------------|-----------------|
| 3.170.1.5.1.0090.1.0002 | 2 | 0.9 | 11.8 | 24 | 224 | 1200 |
| 3.170.1.5.1.0090.1.0004 | 4 | 0.9 | 13.8 | 48 | 303 | 1200 |
| 3.170.1.5.1.0090.1.0006 | 6 | 0.9 | 16.6 | 72 | 414 | 1200 |
| 3.170.1.5.1.0090.1.0010 | 10 | 0.9 | 17.2 | 120 | 473 | 1200 |
| 3.170.1.5.1.0090.1.0020 | 20 | 0.9 | 22.1 | 240 | 759 | 1000 |
| 3.170.1.5.1.0090.1.0025 | 25 | 0.9 | 24.1 | 299.9 | 904 | 1000 |
| 3.170.1.5.1.0090.1.0030 | 30 | 0.9 | 27.3 | 359.9 | 1100 | 1000 |
| 3.170.1.5.1.0090.1.0040 | 40 | 0.9 | 29.4 | 479.9 | 1309 | 1000 |
| 3.170.1.5.1.0090.1.0050 | 50 | 0.9 | 31.8 | 599.8 | 1540 | 500 |
| 3.170.1.5.1.0090.1.0070 | 70 | 0.9 | 35.4 | 839.7 | 2014 | 500 |
| 3.170.1.5.1.0090.1.0080 | 80 | 0.9 | 37.4 | 959.7 | 2246 | 500 |
| 3.170.1.5.1.0090.1.0100 | 100 | 0.9 | 41.6 | 1223 | 2761 | 400 |
| 3.170.1.5.1.0090.1.0150 | 150 | 0.9 | 51.1 | 1834.5 | 4012 | 300 |
| 3.170.1.5.1.0090.1.0200 | 200 | 0.9 | 56.2 | 2446 | 4976 | 300 |
| 3.170.1.5.1.0090.1.0250 | 250 | 0.9 | 62 | 3057.4 | 6039 | 300 |
| 3.170.1.5.1.0090.1.0300 | 300 | 0.9 | 67.1 | 3668.9 | 7084 | 250 |
| 3.170.1.5.1.0090.1.0350 | 350 | 0.9 | 70 | 4280.4 | 7905 | 250 |
| 3.170.1.5.1.0090.1.0400 | 400 | 0.9 | 75.6 | 4891.9 | 9055 | 250 |
| 3.170.1.5.1.0090.1.0500 | 500 | 0.9 | 85.4 | 6114.8 | 11314 | 200 |
| 3.170.1.5.1.0090.1.0600 | 600 | 0.9 | 92.8 | 7337.8 | 13354 | 200 |