

## Kullanım Alanları

- 10 BASE-T (IEEE 802.3) Ethernet
- 100 BASE-T (IEEE 802.3u) Fast Ethernet
- 100 VG-AnyLAN (IEEE 802.12)
- 4/16 Mbps Token Ring (IEEE 802.5)
- 100 Mbps CDDI
- 52/155 Mbps ATM
- 1000 BASE-T (Gigabit Ethernet) (IEEE 802.3 ab)

## Kablo Yapısı

- 1 - İletken : Elektrolitik mono bakır iletken.
- 2 - İzole : Solid polietilen izolasyon
- 3 - Büküm : İzoleler çiftler halinde ve tüm çiftler bir arada bükülür.
- 4 - Ayırıcı : Polyester bant
- 5 - Ekran : Kalaylı bakır toprak teli. Al/PET bant
- 6 - Askı Teli : Galvanizli çelik tel
- 7 - Dış Kılıf : Ultraviyole ışınlarına dayanıklı polietilen dış kılıf. RAL 9004 (Siyah)

## Teknik Özellikler

İletken Direnci Ω/km	İzolasyon Direnci MΩxkm (500 V DC)	Efektif Kapasite nF/km	Direnç Dengesizliği	Yayımlama Hızı	Çalışma Voltajı V	Test Voltajı V	Karakteristik Empedans Ω
94	5000	56	%2	%67-69	250	1200	100±%15. 1-100 MHz

## Mekanik Özellikler

Bükülme Yarıçapı	Sıcaklık Aralığı Çalışma
8xD mm	-55°C~+60°C

## Standartlar

### Üretim Standartları

ANSI/TIA-568-C.2.  
IEC-61156-5.  
IEC-11801

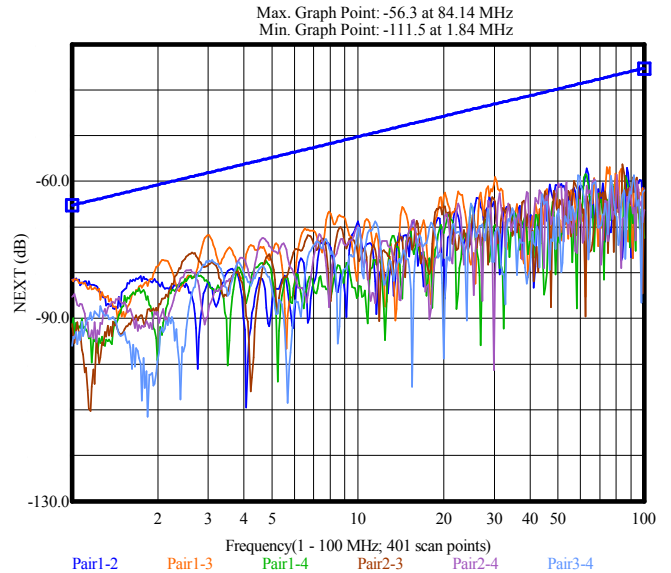
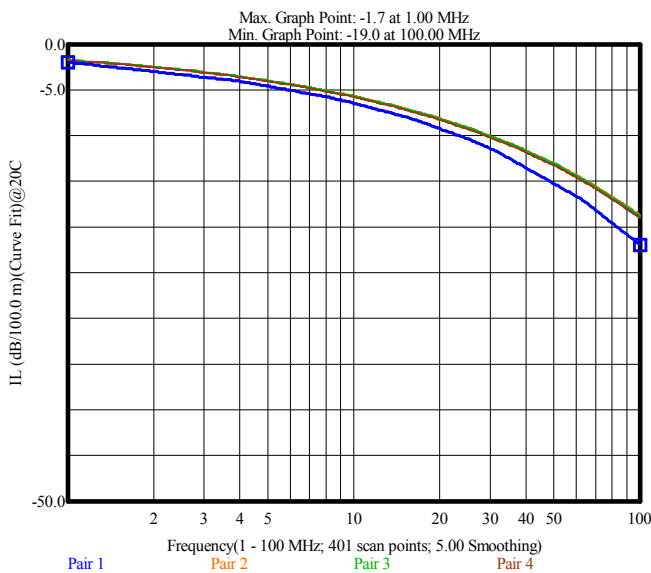
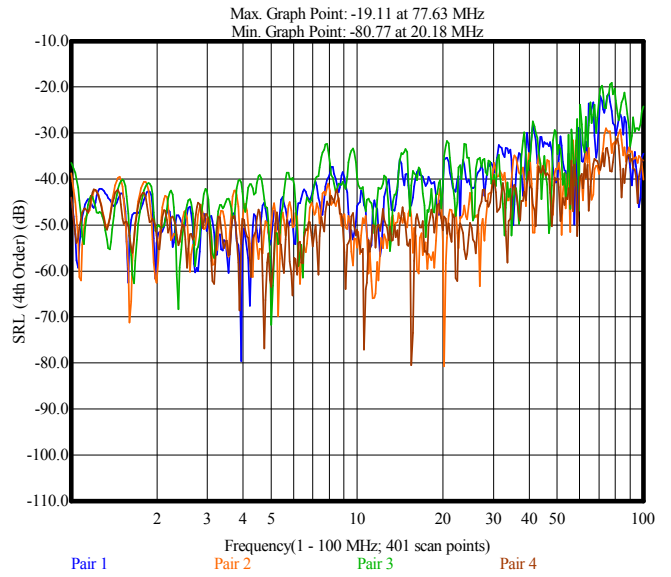
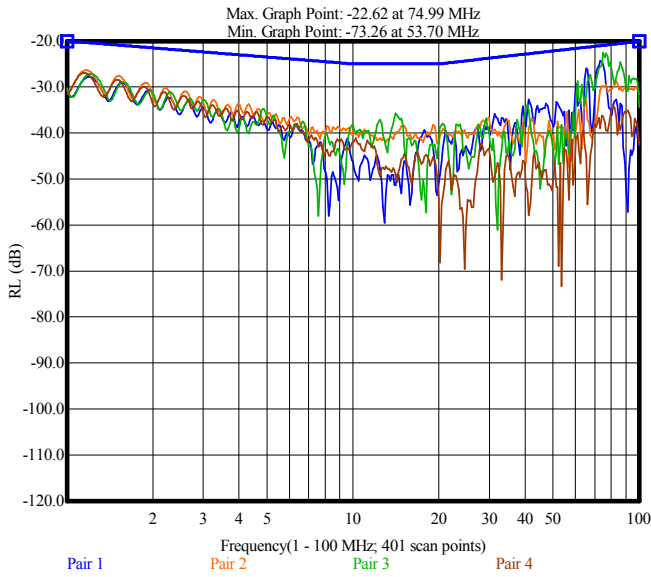
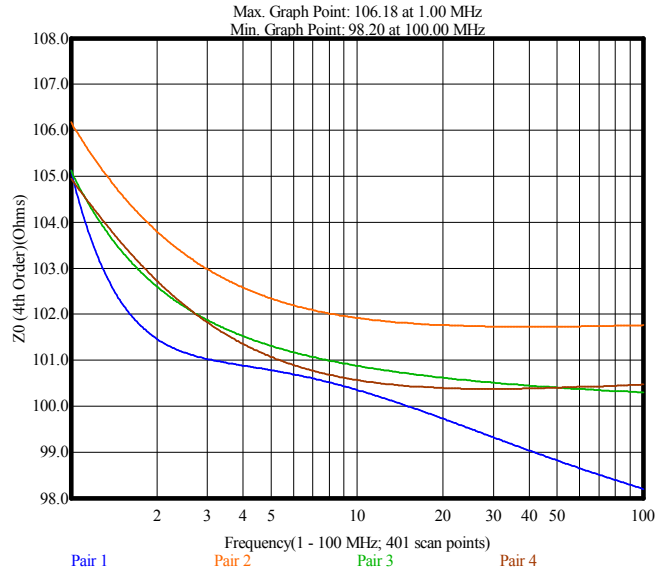
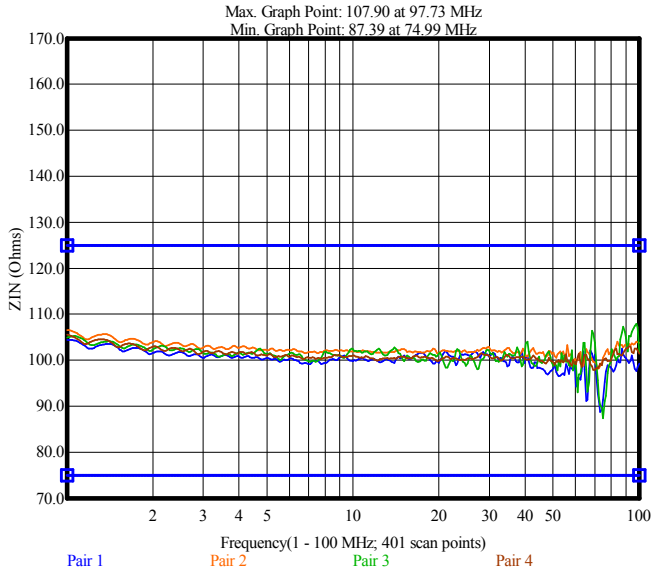
## Elektriksel Özellikler

Frekans MHz	Ek Kaybı dB/100m (Max.)	Near-end Crosstalk (NEXT) Kaybı dB (Min.)	Power-sum Near-end Crosstalk (PSNEXT) Kaybı dB (Min.)	Equal-level Far-end Crosstalk (ELFEXT) dB/100m (Min.)	Power-sum Equal Level Far-end Crosstalk (PSELFEXT) dB/100m (Min.)	Dönüş Kaybı (RL) dB (Min.)
0.772	1.8	67	64	66	66	-
1	2	65.3	62.3	63.8	63.8	23
4	4.1	56.3	53.3	51.8	51.8	23
8	5.8	51.8	48.8	45.7	45.7	23
10	6.5	50.3	47.3	43.8	43.8	23
16	8.2	47.2	44.2	39.7	39.7	23
20	9.3	45.8	42.8	37.8	37.8	23
25	10.4	44.3	41.3	35.8	35.8	22
31.25	11.7	42.9	39.9	33.9	33.9	21
62.5	17	38.4	35.4	27.9	27.9	18
100	22	35.3	32.3	23.8	23.8	16

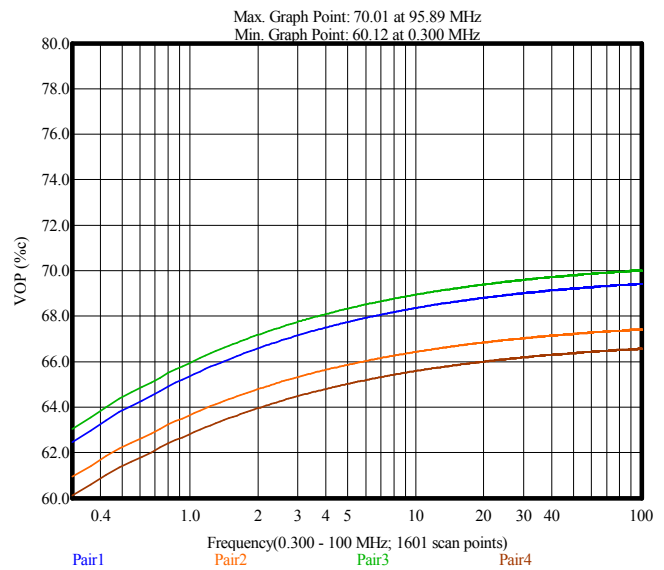
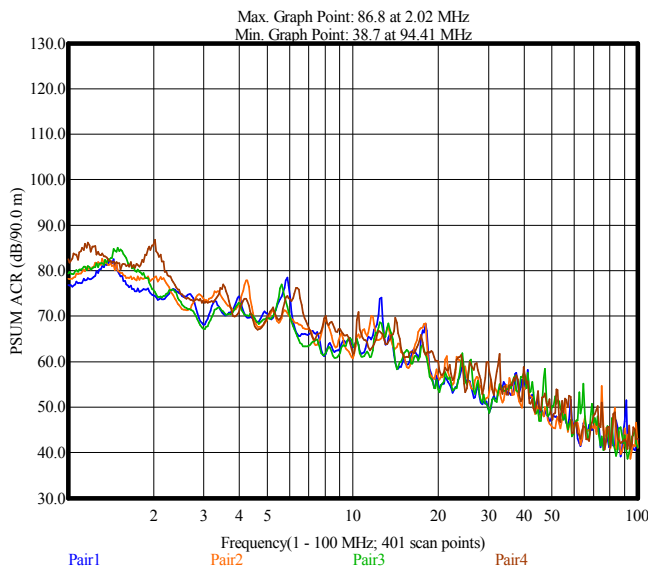
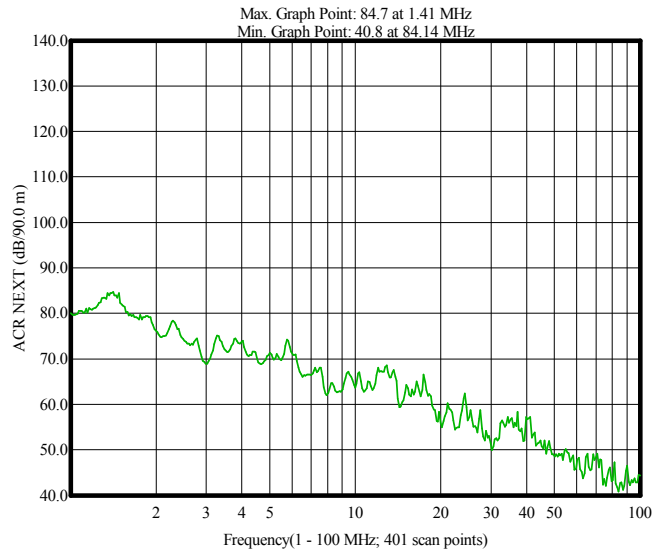
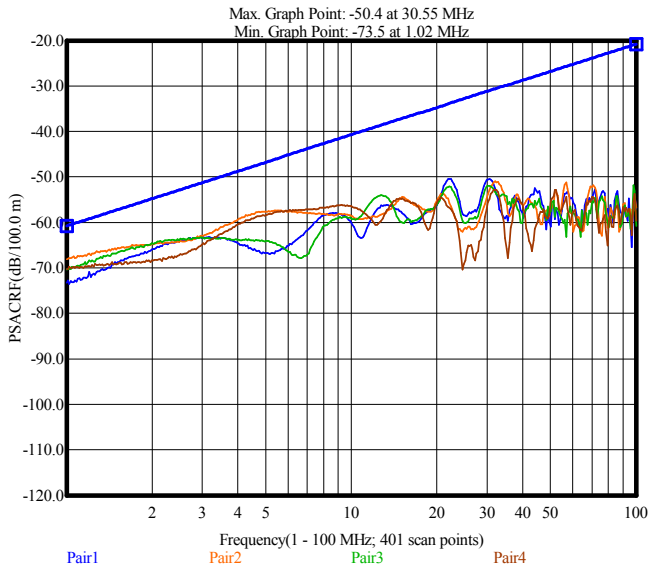
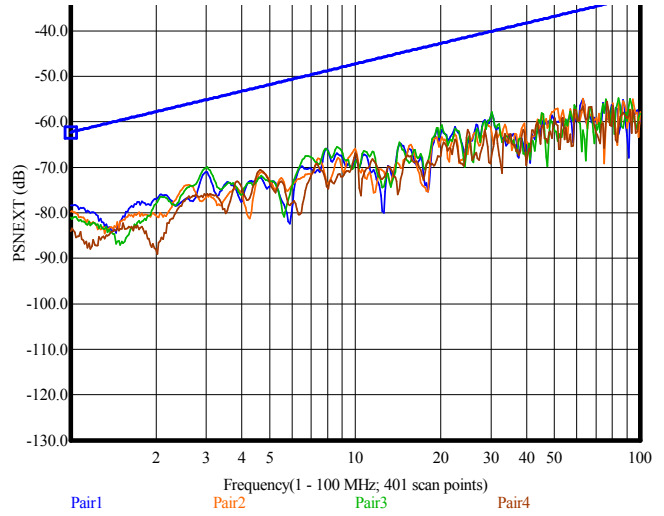
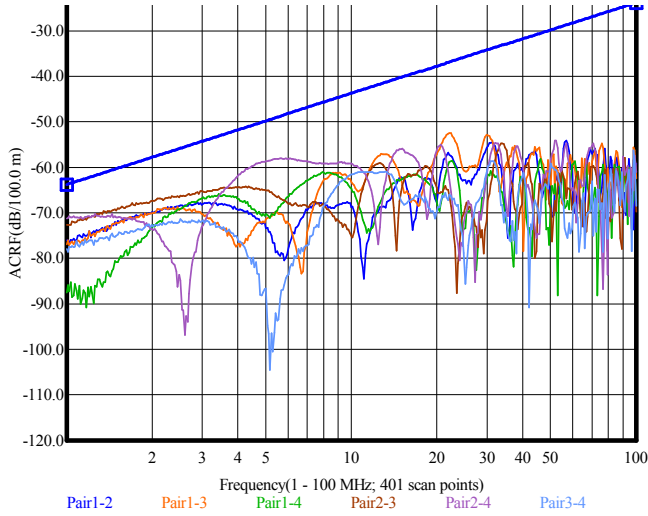
## Cat 5e F/UTP 24 AWG Havai PE

Part Numarası	Per Sayısı	İletken Çapı (mm)	Ortalama Dış Çap (mm)	Bakır Ağırlığı (kg/km)	Ortalama Ağırlık (kg/km)	Makara Boyu (m)
3.424.2.1.1.0051.0.0004	4	0.51	5.5	17.2	52	100/500/1000

Cat 5e Test Sonuç Grafikleri



## Cat 5e Test Sonuç Grafikleri



## Cat 5e Test Sonuç Grafikleri

